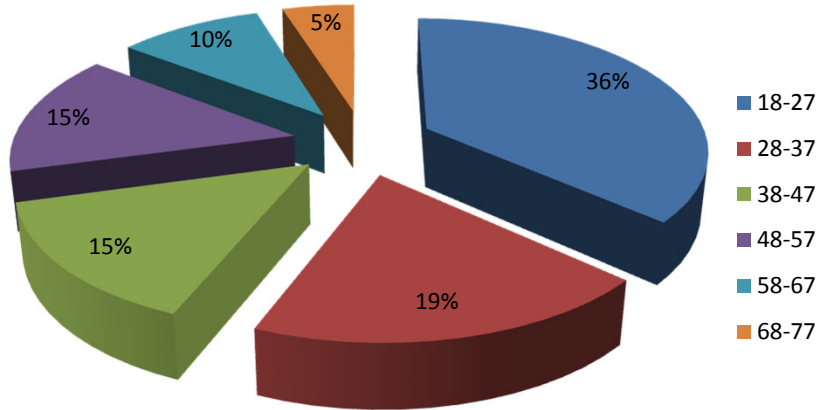
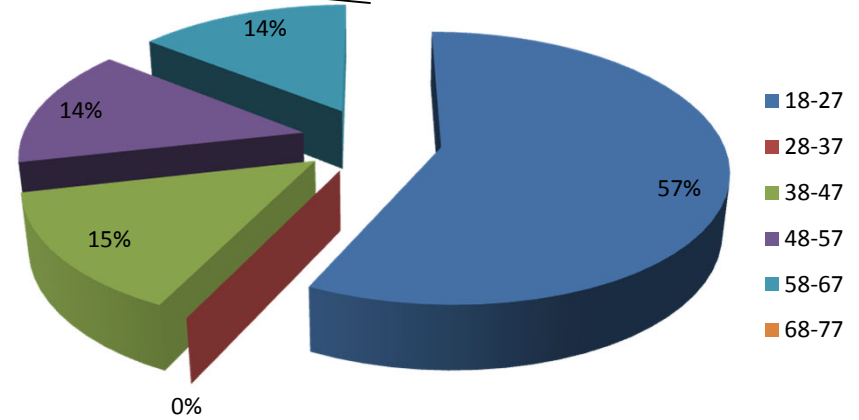


Fire Department - Demographics Dashboard

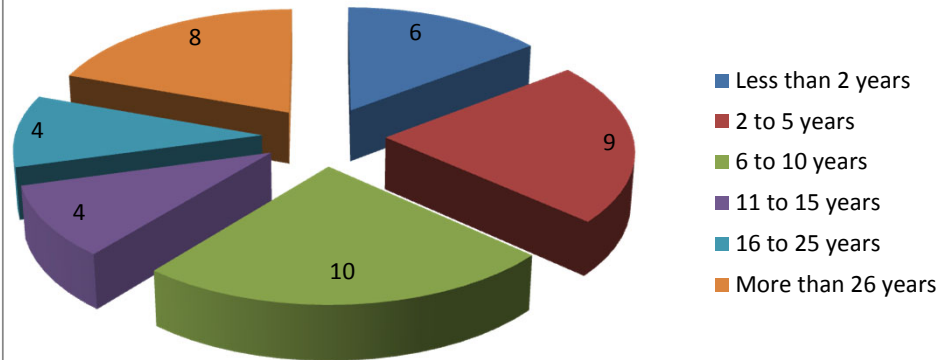
Active Firefighters by Age
based on 1/27/20 roster



Active Firefighters by Age
based on >50% participation in 2019

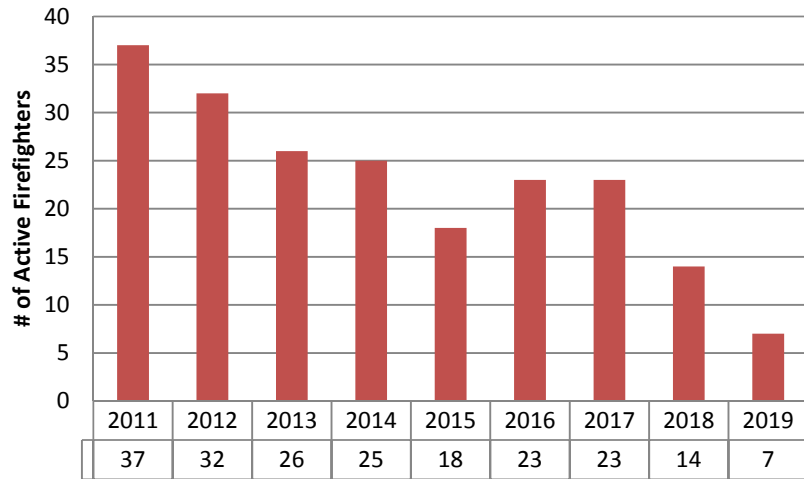


Years of Service of Active Members
based on 1/27/20 roster



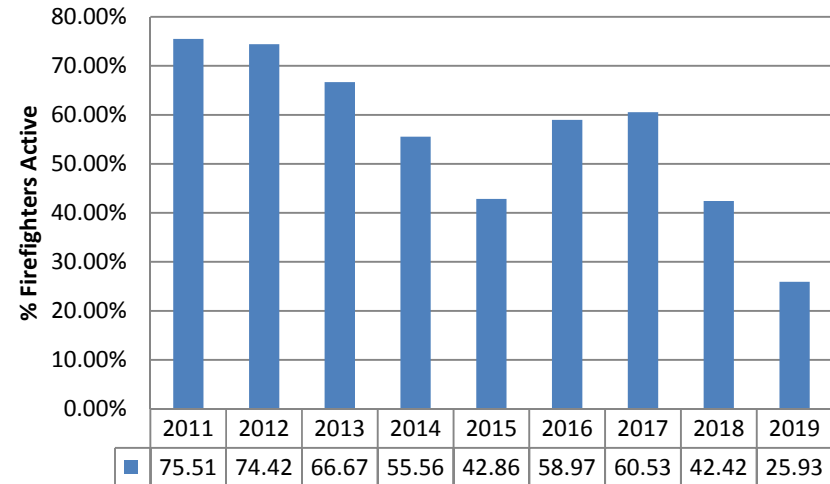
Active Firefighters 2011-2019

Active means >50% participation

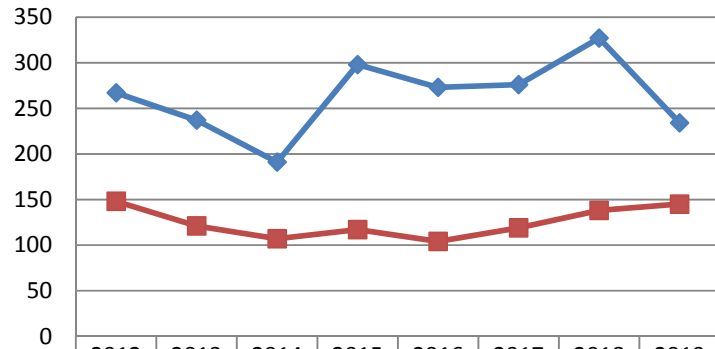


% of Firefighters Active 2011-2019

Active means >50% participation

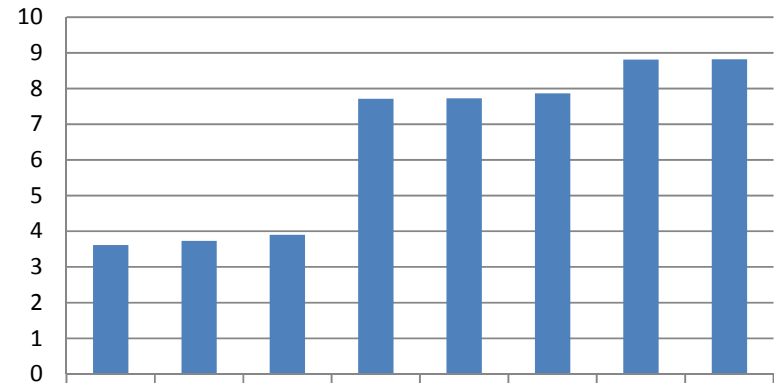


Calls Made - Day/Night



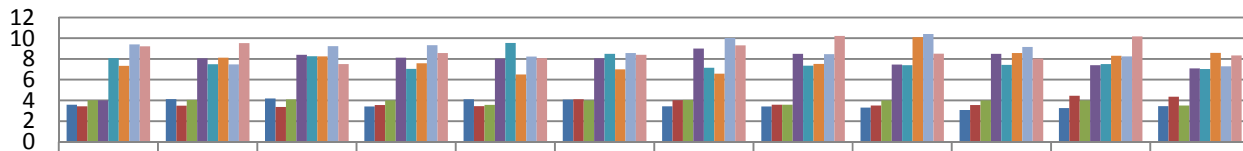
	2012	2013	2014	2015	2016	2017	2018	2019
Day	267	237	191	298	273	276	327	234
Night	148	121	107	117	104	119	138	145

Response Time - Average



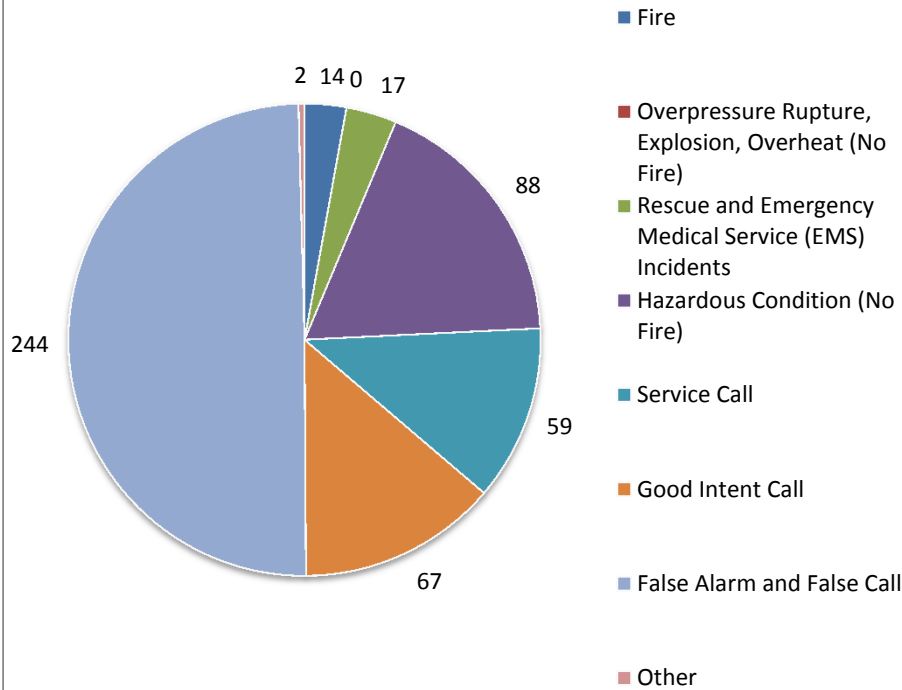
	2012	2013	2014	2015	2016	2017	2018	2019
Average	3.62	3.74	3.90	7.71	7.73	7.87	8.81	8.82

Response Time - Minutes



	Jan	Feb	Mar	Apr	May	Jun	Jul	Aug	Sep	Oct	Nov	Dec
2012	3.58	4.12	4.19	3.41	4.10	4.08	3.43	3.42	3.30	3.08	3.26	3.45
2013	3.43	3.49	3.36	3.55	3.44	4.11	4.01	3.58	3.50	3.55	4.44	4.36
2014	4.01	4.05	4.09	4.00	3.56	4.00	4.04	3.59	4.00	4.00	4.00	3.50
2015	4.00	8.05	8.39	8.12	8.02	8.06	9.00	8.49	7.45	8.49	7.39	7.08
2016	8.08	7.49	8.25	7.04	9.54	8.49	7.15	7.34	7.40	7.42	7.50	7.03
2017	7.33	8.12	8.24	7.58	6.50	7.00	6.57	7.51	10.09	8.56	8.30	8.58
2018	9.40	7.47	9.23	9.32	8.22	8.56	10.02	8.46	10.40	9.15	8.24	7.28
2019	9.21	9.53	7.50	8.56	8.08	8.40	9.30	10.22	8.51	8.02	10.17	8.33

Fire Calls By Incident Type - 2019



Fire - Structure fire; vehicle fire; natural vegetation fire; outside rubbish fire; special outside fire

Overpressure Rupture, Explosion, Overheat (No Fire) -

Overpressure rupture from steam, air or gas; excessive heat, scorch burns with no ignition

Rescue and Emergency Medical Service Incident -

Medical assist; emergency medical service incident; extrication, rescue; water and ice-related rescue; and rescue or EMS standby

Hazardous Condition (No Fire) - Combustible/flammable

spills and leaks; chemical release, reaction or toxic condition; electrical wiring/equipment problem; and accident, potential accident

Service Call - Person in distress; water problem; smoke, odor

problem; animal problem or rescue; public service assistance; unauthorized burning; and cover assignment, standby at fire station, move-up

Good Intent Call - Dispatched and canceled en route;

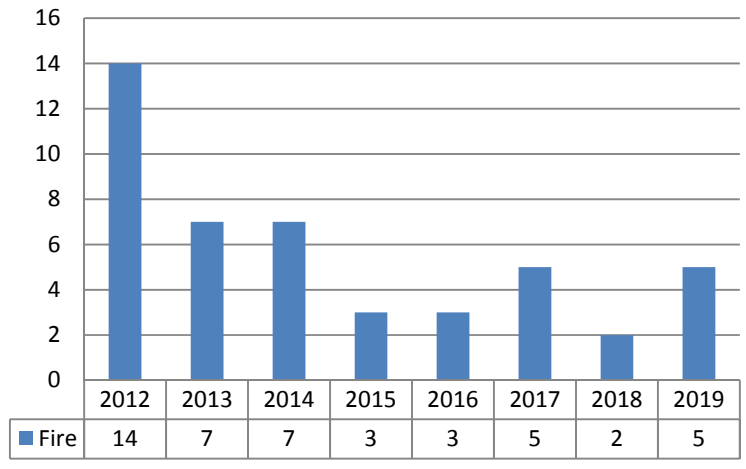
controlled burning; vicinity alarm; steam, other gas mistaken for smoke

False Alarm and False Call - Includes: Malicious or

mischievous false alarm; system or detector malfunction including sprinklers, smoke detectors, heat detectors, alarm systems and carbon monoxide detectors; and unintentional

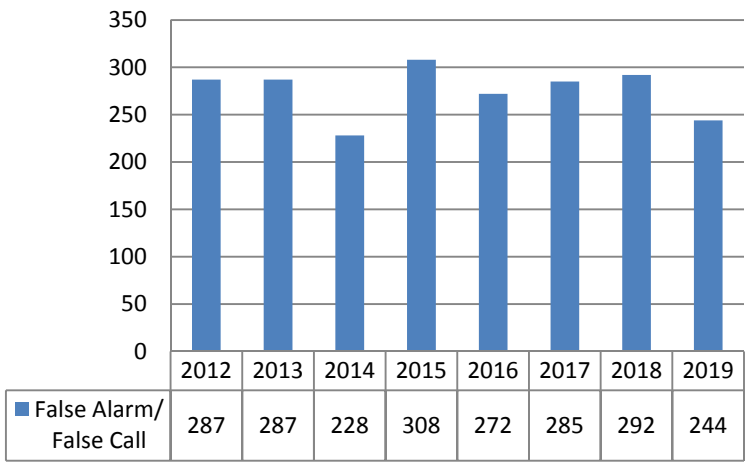
system or detector operation including sprinklers, smoke detectors, heat detectors, alarm systems and carbon

Structure Fires - Total By Year



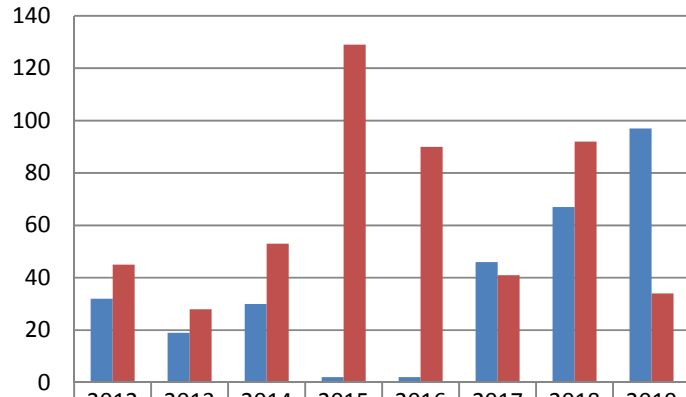
Structure Fires - Includes: building fires; cooking fire involving contents of a cooking vessel without fire extension beyond the vessel; chimney or flue fire, fuel burner/boiler, where flames cause no damage outside the fire box; and trash or rubbish fire in a structure, with no flame damage to structure or its contents.

False Alarm/Call - Total By Year



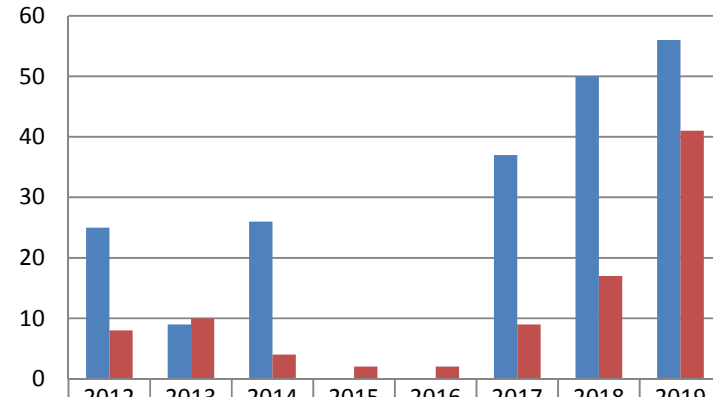
False Alarm and False Call - Includes: Malicious or mischievous false alarm; system or dectcotr malfunction including sprinklers, smoke detectors, heat detectors, alarm systems and carbon monoxide detectors; and unintentional system or detector operation including sprinklers, smoke detectors, heat detectors, alarm systems and carbon monoxide detectors.

Mutual Aid By Type



Received	32	19	30	2	2	46	67	97
Given	45	28	53	129	90	41	92	34

Mutual Aid Received - Day/Night



Day	25	9	26	0	0	37	50	56
Night	8	10	4	2	2	9	17	41